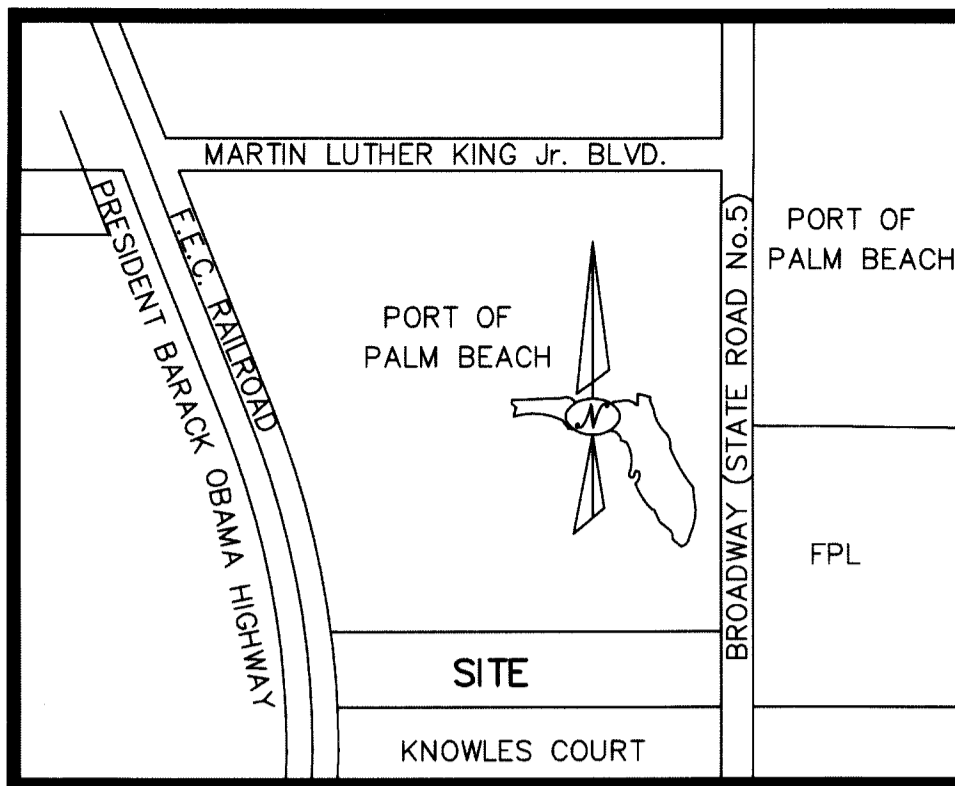


PORT OF PALM BEACH DISTRICT ANNEX PROPERTY

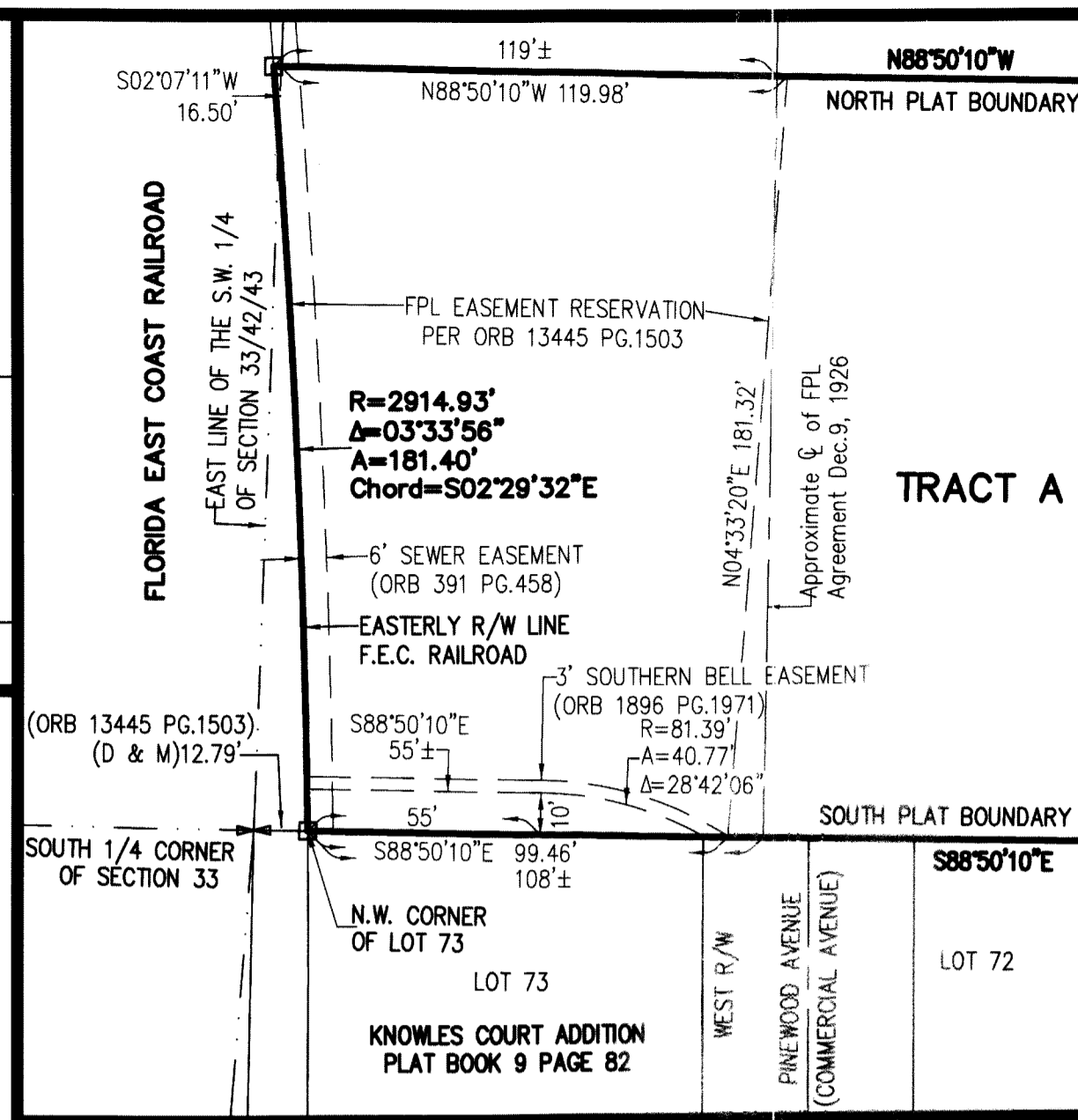
LYING IN SECTION 33, TOWNSHIP 42 SOUTH, RANGE 43 EAST,
CITY OF RIVIERA BEACH, PALM BEACH COUNTY, FLORIDA

SHEET 2 OF 2

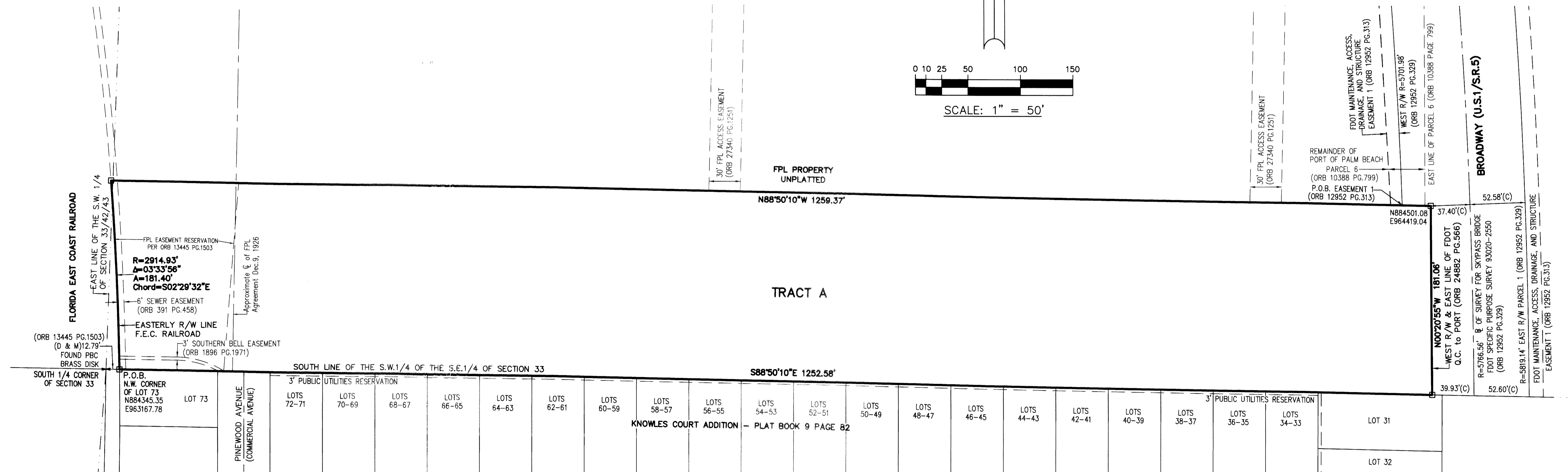
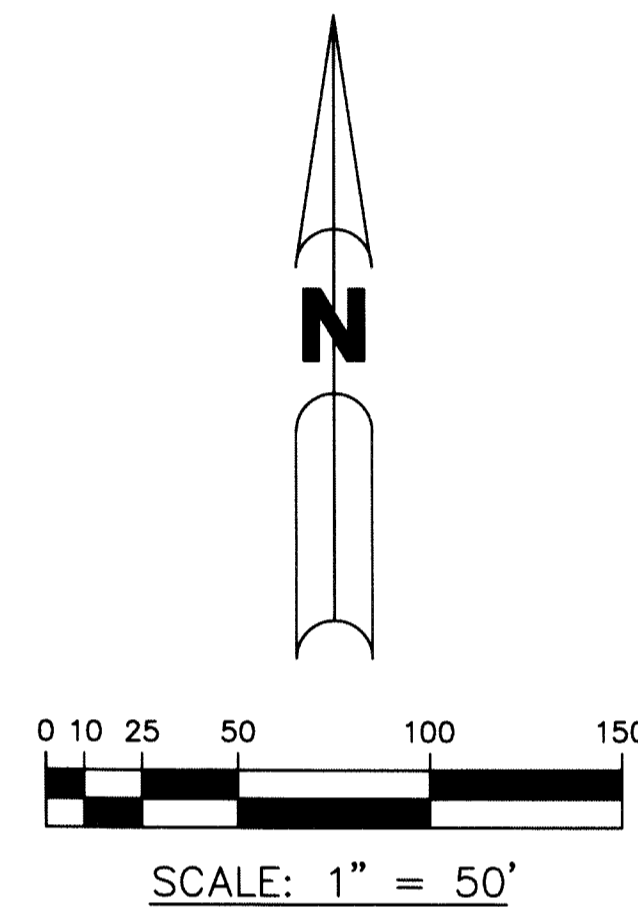
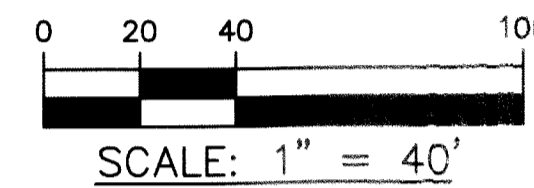
67



VICINITY MAP
NOT TO SCALE



DETAIL



PREPARING SURVEYOR & MAPPER'S STATEMENT
THIS INSTRUMENT WAS PREPARED BY
JOHN E. PHILLIPS III, P.S.M. 4826

BROWN & PHILLIPS, INC.
CERTIFICATE OF AUTHORIZATION # LB 6473
1860 OLD OKEECHOBEE RD., SUITE 509
WEST PALM BEACH, FLORIDA 33409
561-615-3988, 615-3986 FAX